

Lanark (minotaur barbarian)

September 22, 2023



Minotaur barbarian with broken left horn, has agoraphobia but skilled at navigating structures and mazes.

Precision (tiefling monk)

September 22, 2023



Tiefling Monk with cerebral palsy, uses feet for unarmed attacks and tail to load hand crossbow.

Naiara Trevica (human fighter)

September 22, 2023



Human fighter with ulnar drift arthritis in her hands, uses compression gauntlets and weapon brace, known for her skills and reputation as a skilled warrior.

Rohna Ginnsley (human bard) [Alternate Sculpt]

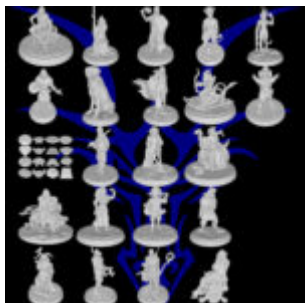
September 22, 2023



Human bard with multiple sclerosis, uses a metal and wood wheelchair with spheres controlled by her thoughts for mobility. Warm, soft-spoken, and compassionate.

Limitless Champions Gold Collection

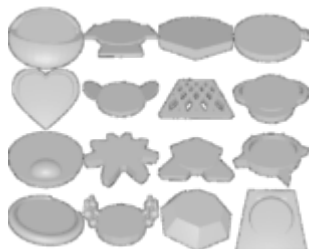
September 22, 2023



This is the collection of all the physical minis for the Gold and Platinum Backer tiers of Limitless Champions, including the condition monitors. Simply choose which scale you'd like.

16 DnD 5e Condition Markers

September 22, 2023



Designed for visually impaired gamers but useful for all, easily track character conditions with braille labels and tactile markings.

Ollie Dragao (halfling/dragonborn bard)

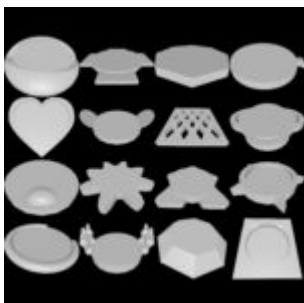
September 22, 2023



Halfling bard with Down syndrome and dragonborn ears, accompanied by loyal service dog, Tazz, and shares a deep connection with him.

16 D&D 5e Condition Markers Printable Miniature STL

September 22, 2023

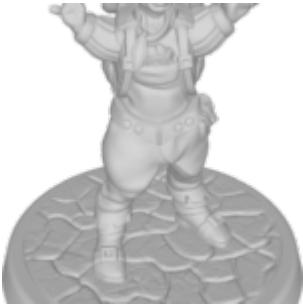


Designed for visually impaired gamers, allows easy tracking of

different character conditions with braille labels and tactile markings.

Zilji Larka Printable Miniature STL

September 22, 2023



Rock gnome wizard with ectrodactyly, missing fingers, uses Mage Hand and humor to challenge people's expectations.

Veritas Cadell Printable Miniature STL

September 22, 2023



Tiefling rogue with spastic diplegia cerebral palsy, uses forearm crutches for mobility and adapts somatic components for spellcasting.

Veralynn Sweetbriar Printable Miniature STL

September 22, 2023



High elf druid with Myalgic Encephalomyelitis/Chronic Fatigue Syndrome, using a wheelchair and assistive devices to manage symptoms.

Rork Printable Miniature STL

September 22, 2023



Red kobold with panic disorder, fiddles with a wicker ball to cope with anxiety, prefers the calming forest over loud and busy places.

Rohna Ginnsley Printable Miniature STL

September 22, 2023



Human bard with multiple sclerosis, uses a metal and wood wheelchair with spheres controlled by her thoughts for mobility. Warm, soft-spoken, and compassionate.

Rohna Ginnsley (Alternate Sculpt) Printable Miniature STL

September 22, 2023



Human bard with multiple sclerosis, uses a metal and wood wheelchair with spheres controlled by her thoughts for mobility. Warm, soft-spoken, and compassionate.

Rivaan Linxakasendalor Printable Miniature STL

September 22, 2023



Blue dragonborn ranger with diastrophic dysplasia, uses a wheeled sled for mobility and carries weapons for combat.

Precision Printable Miniature STL

September 22, 2023



Tiefling Monk with cerebral palsy, uses feet for unarmed attacks and tail to load hand crossbow.