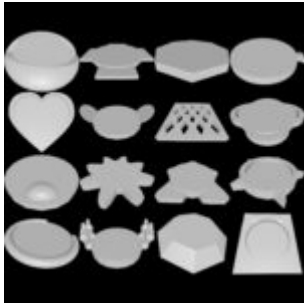


# 16 D&D 5e Condition Markers Printable Miniature STL

August 4, 2023

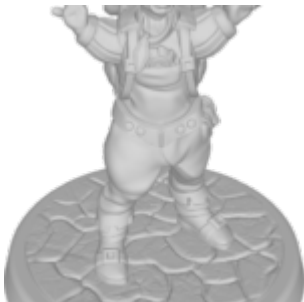


Designed for visually impaired gamers, allows easy tracking of different character conditions with braille labels and tactile markings.

---

## Zilji Larka Printable Miniature STL

August 4, 2023



Rock gnome wizard with ectrodactyly, missing fingers, uses Mage Hand and humor to challenge people's expectations.

---

# Veritas Cadell Printable Miniature STL

August 4, 2023



Tiefling rogue with spastic diplegia cerebral palsy, uses forearm crutches for mobility and adapts somatic components for spellcasting.

---

# Veralynn Sweetbriar Printable Miniature STL

August 4, 2023



High elf druid with Myalgic Encephalomyelitis/Chronic Fatigue

Syndrome, using a wheelchair and assistive devices to manage symptoms.

---

## Rork Printable Miniature STL

August 4, 2023



Red kobold with panic disorder, fiddles with a wicker ball to cope with anxiety, prefers the calming forest over loud and busy places.

---

## Rohna Ginnsley Printable Miniature STL

August 4, 2023



Human bard with multiple sclerosis, uses a metal and wood wheelchair with spheres controlled by her thoughts for mobility. Warm, soft-spoken, and compassionate.

---

## **Rohna Ginnsley (Alternate Sculpt) Printable Miniature STL**

August 4, 2023



Human bard with multiple sclerosis, uses a metal and wood wheelchair with spheres controlled by her thoughts for mobility. Warm, soft-spoken, and compassionate.

---

## **Rivaan Linxakasendalor Printable Miniature STL**

August 4, 2023



Blue dragonborn ranger with diastrophic dysplasia, uses a wheeled sled for mobility and carries weapons for combat.

---

# Precision Printable Miniature STL

August 4, 2023



Tiefling Monk with cerebral palsy, uses feet for unarmed attacks and tail to load hand crossbow.

---

# Orrelius Printable Miniature

# STL

August 4, 2023

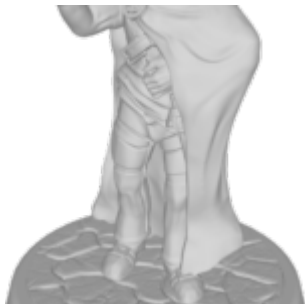


Blind human paladin with braille book and magic staff, a formidable warrior and healer.

---

## Lechlun Adarian Printable Miniature STL

August 4, 2023



Human wizard with Treacher Collins Syndrome, underdeveloped facial features, and wields Oblivion manipulation for powerful spells.

---

# Moonmaeven and Freckles Printable Miniature STL

August 4, 2023



High elf Druid/Bard with emotional support animal, Freckles, a St. Bernard dog, and lives with anxiety and memory loss.

---

# Naiara Trevica Printable Miniature STL

August 4, 2023



Human fighter with ulnar drift arthritis in her hands, uses compression gauntlets and weapon brace, known for her skills and reputation as a skilled warrior.

---

# Ollie Dragao Printable Miniature STL

August 4, 2023



Halfling bard with Down syndrome and dragonborn ears, accompanied by loyal service dog, Tazz, and shares a deep connection with him.

---

# Lanark Printable Miniature STL

August 4, 2023



Minotaur barbarian with broken left horn, has agoraphobia but skilled at navigating structures and mazes.



---

# Jaydrey Forewood Printable Miniature STL

August 4, 2023



Halfling sorcerer with cleft palate, skilled herbalist, and orphaned during a plague, saved by a silver-haired woman.