

Stoneharbor | Andovir Atlas

July 2, 2024



Explore Stoneharbor! New ancestries, adventure hooks, NPCs, & maps for your D&D campaign. Inclusive, diverse, and ready for any world. #DnD #TTRPG

Ascent to the Depths of Dread

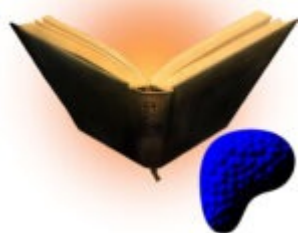
July 2, 2024



Climb the depths of dread in this spine-chilling accessible #DnD adventure! Encounter new monsters, navigate complex encounters, and prevent the darkness! #TTRPG #braille

Wyrms' Workshop Sidequest: Personalized D&D Design Experience

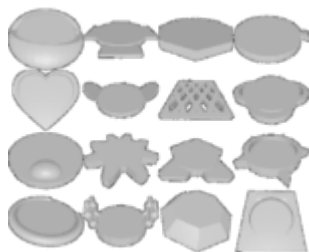
July 2, 2024



For our Patrons ([Young Dragon+](#)), a discounted option for working with us to make your ideas canon in our #accesspunk campaign world!

16 DnD 5e Condition Markers

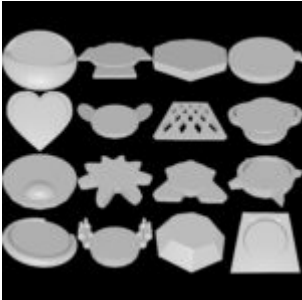
July 2, 2024



Designed for visually impaired gamers but useful for all, easily track character conditions with braille labels and tactile markings.

16 D&D 5e Condition Markers Printable Miniature STL

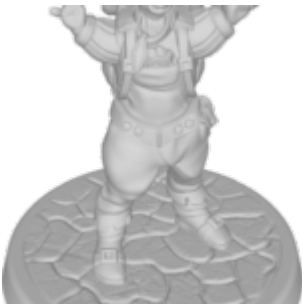
July 2, 2024



Designed for visually impaired gamers, allows easy tracking of different character conditions with braille labels and tactile markings.

Zilji Larka Printable Miniature STL

July 2, 2024



Rock gnome wizard with ectrodactyly, missing fingers, uses Mage

Hand and humor to challenge people's expectations.

Veritas Cadell Printable Miniature STL

July 2, 2024



Tiefling rogue with spastic diplegia cerebral palsy, uses forearm crutches for mobility and adapts somatic components for spellcasting.

Veralynn Sweetbriar Printable Miniature STL

July 2, 2024



High elf druid with Myalgic Encephalomyelitis/Chronic Fatigue Syndrome, using a wheelchair and assistive devices to manage symptoms.

Rork Printable Miniature STL

July 2, 2024



Red kobold with panic disorder, fiddles with a wicker ball to cope with anxiety, prefers the calming forest over loud and busy places.

Rohna Ginnsley Printable

Miniature STL

July 2, 2024



Human bard with multiple sclerosis, uses a metal and wood wheelchair with spheres controlled by her thoughts for mobility. Warm, soft-spoken, and compassionate.

Rohna Ginnsley (Alternate Sculpt) Printable Miniature STL

July 2, 2024



Human bard with multiple sclerosis, uses a metal and wood wheelchair with spheres controlled by her thoughts for mobility. Warm, soft-spoken, and compassionate.

Rivaan Linxakasendalor

Printable Miniature STL

July 2, 2024



Blue dragonborn ranger with diastrophic dysplasia, uses a wheeled sled for mobility and carries weapons for combat.

Precision Printable Miniature

STL

July 2, 2024



Tiefling Monk with cerebral palsy, uses feet for unarmed attacks and tail to load hand crossbow.

Orrelius Printable Miniature STL

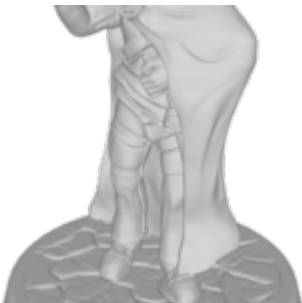
July 2, 2024



Blind human paladin with braille book and magic staff, a formidable warrior and healer.

Lechlun Adarian Printable Miniature STL

July 2, 2024



Human wizard with Treacher Collins Syndrome, underdeveloped facial features, and wields Oblivion manipulation for powerful

spells.

Moonmaeven and Freckles Printable Miniature STL

July 2, 2024



High elf Druid/Bard with emotional support animal, Freckles, a St. Bernard dog, and lives with anxiety and memory loss.