

Ascent to the Depths of Dread

March 10, 2024



Climb the depths of dread in this spine-chilling accessible #DnD adventure! Encounter new monsters, navigate complex encounters, and prevent the darkness! #TTRPG #braille

Brace (half-orc cleric)

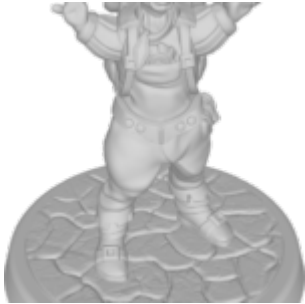
March 10, 2024



Half-orc cleric missing his right hand due to amputation, wearing platemail and using a ring to dispel doubts about his self-worth. Possesses Better Together ability. Struggles with intrusive thoughts related to masculinity and self-worth.

Zilji Larka Printable Miniature STL

March 10, 2024



Rock gnome wizard with ectrodactyly, missing fingers, uses Mage Hand and humor to challenge people's expectations.

Veritas Cadell Printable Miniature STL

March 10, 2024



Tiefling rogue with spastic diplegia cerebral palsy, uses forearm crutches for mobility and adapts somatic components for spellcasting.

Veralynn Sweetbriar Printable Miniature STL

March 10, 2024



High elf druid with Myalgic Encephalomyelitis/Chronic Fatigue Syndrome, using a wheelchair and assistive devices to manage symptoms.

Rork Printable Miniature STL

March 10, 2024



Red kobold with panic disorder, fiddles with a wicker ball to cope with anxiety, prefers the calming forest over loud and busy places.

Rohna Ginnsley Printable Miniature STL

March 10, 2024



Human bard with multiple sclerosis, uses a metal and wood wheelchair with spheres controlled by her thoughts for mobility. Warm, soft-spoken, and compassionate.

Rohna Ginnsley (Alternate Sculpt) Printable Miniature STL

March 10, 2024



Human bard with multiple sclerosis, uses a metal and wood wheelchair with spheres controlled by her thoughts for mobility. Warm, soft-spoken, and compassionate.

Rivaan Linxakasendalor

Printable Miniature STL

March 10, 2024



Blue dragonborn ranger with diastrophic dysplasia, uses a wheeled sled for mobility and carries weapons for combat.

Precision Printable Miniature STL

March 10, 2024



Tiefling Monk with cerebral palsy, uses feet for unarmed attacks and tail to load hand crossbow.

Orrelius Printable Miniature STL

March 10, 2024



Blind human paladin with braille book and magic staff, a formidable warrior and healer.

Lechlun Adarian Printable Miniature STL

March 10, 2024



Human wizard with Treacher Collins Syndrome, underdeveloped facial features, and wields Oblivion manipulation for powerful spells.

Moonmaeven and Freckles Printable Miniature STL

March 10, 2024



High elf Druid/Bard with emotional support animal, Freckles, a

St. Bernard dog, and lives with anxiety and memory loss.

Naiara Trevica Printable Miniature STL

March 10, 2024



Human fighter with ulnar drift arthritis in her hands, uses compression gauntlets and weapon brace, known for her skills and reputation as a skilled warrior.

Ollie Dragao Printable Miniature STL

March 10, 2024



Halfling bard with Down syndrome and dragonborn ears, accompanied by loyal service dog, Tazz, and shares a deep connection with him.

Lanark Printable Miniature STL

March 10, 2024



Minotaur barbarian with broken left horn, has agoraphobia but skilled at navigating structures and mazes.