

Aderyn Lloyd (half-elf rogue)

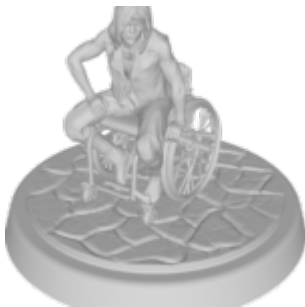
September 22, 2023



Half-elf rogue with fibromyalgia and other invisible disabilities, represented by their figure in a wheelchair. Skilled cartographer with a quick wit, rebellious streak, and fierce loyalty to friends.

Aderyn Lloyd Printable Miniature STL

September 22, 2023



Half-elf rogue with fibromyalgia and other invisible disabilities, represented by their figure in a wheelchair. Skilled cartographer with a quick wit, rebellious streak, and fierce loyalty to friends.

Limitless Champions: 20 Disabled D&D 5e NPCs (eBook edition)

September 22, 2023



Unleash the power of inclusivity in your D&D 5e game with a groundbreaking collection of 20 disabled, neurodivergent, mentally ill, and chronically ill NPCs.