

Aderyn Lloyd (half-elf rogue)

September 22, 2023



Half-elf rogue with fibromyalgia and other invisible disabilities, represented by their figure in a wheelchair. Skilled cartographer with a quick wit, rebellious streak, and fierce loyalty to friends.

Moonmaeven (elf druid/bard) and Freckles (emotional comfort dog)

September 22, 2023



High elf Druid/Bard with emotional support animal, Freckles, a St. Bernard dog, and lives with anxiety and memory loss.

Dread (tiefling warlock)

September 22, 2023



Blind tiefling warlock with heightened other senses, has difficulty forming relationships, but willing to help others.

Rohna Ginnsley (human bard)

September 22, 2023



Human bard with multiple sclerosis, uses a metal and wood wheelchair with spheres controlled by her thoughts for mobility. Warm, soft-spoken, and compassionate.

Lanark (minotaur barbarian)

September 22, 2023



Minotaur barbarian with broken left horn, has agoraphobia but skilled at navigating structures and mazes.

Precision (tiefling monk)

September 22, 2023



Tiefling Monk with cerebral palsy, uses feet for unarmed attacks and tail to load hand crossbow.

Naiara Trevica (human fighter)

September 22, 2023



Human fighter with ulnar drift arthritis in her hands, uses compression gauntlets and weapon brace, known for her skills and reputation as a skilled warrior.

Rohna Ginnsley (human bard) [Alternate Sculpt]

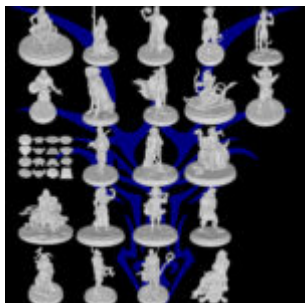
September 22, 2023



Human bard with multiple sclerosis, uses a metal and wood wheelchair with spheres controlled by her thoughts for mobility. Warm, soft-spoken, and compassionate.

Limitless Champions Gold Collection

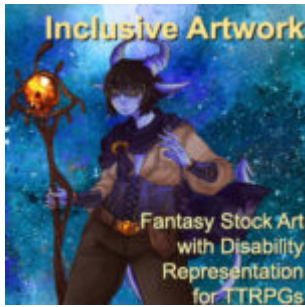
September 22, 2023



This is the collection of all the physical minis for the Gold and Platinum Backer tiers of Limitless Champions, including the condition monitors. Simply choose which scale you'd like.

Inclusive Artwork: Commercial Fantasy Stock Art with Disability Representation for TTRPG

September 22, 2023



Make your TTRPG products unforgettable with the Inclusive Artwork Collection: Fantasy #DnD commercial #stockart with ♿ disability representation for #DnD! ✖

Wyrmworks Publishing Gift Cards

September 22, 2023



Spread joy and inclusion with our gift cards, perfect for every occasion. Explore a diverse array of tabletop roleplaying supplements that embrace accessibility for all. Give the gift of limitless adventure and imagination, making lives better through the power of storytelling.

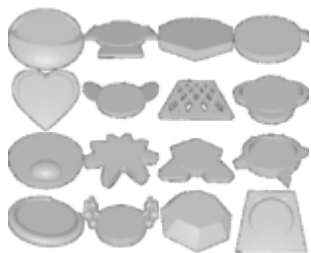
Ideal for birthdays, holidays, and special moments, Wyrmworks Publishing Gift Cards let your loved ones choose from a range of products that promote accessibility and universal design. Make a meaningful impact by sharing the joy of roleplaying and

inclusion. Send a gift card today, and inspire unforgettable journeys!

Our gift cards are managed by GiftUp! Use the form below to purchase. ↴

16 DnD 5e Condition Markers

September 22, 2023



Designed for visually impaired gamers but useful for all, easily track character conditions with braille labels and tactile markings.

Ollie Dragao (halfling/dragonborn bard)

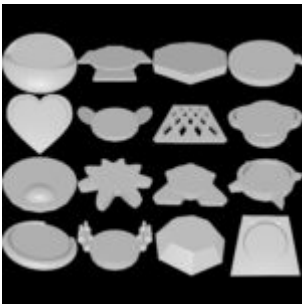
September 22, 2023



Halfling bard with Down syndrome and dragonborn ears, accompanied by loyal service dog, Tazz, and shares a deep connection with him.

16 D&D 5e Condition Markers Printable Miniature STL

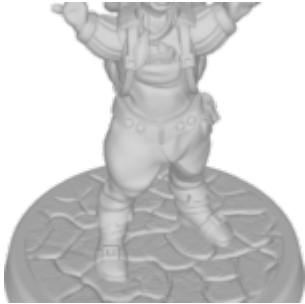
September 22, 2023



Designed for visually impaired gamers, allows easy tracking of different character conditions with braille labels and tactile markings.

Zilji Larka Printable Miniature STL

September 22, 2023



Rock gnome wizard with ectrodactyly, missing fingers, uses Mage Hand and humor to challenge people's expectations.

Veritas Cadell Printable Miniature STL

September 22, 2023



Tiefling rogue with spastic diplegia cerebral palsy, uses forearm crutches for mobility and adapts somatic components for spellcasting.